



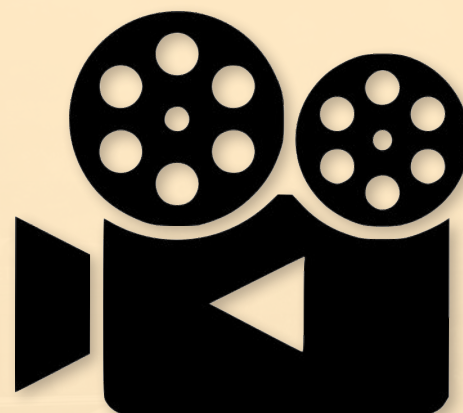
Friends of the Goods Shed FoGS Newsletter N° 15: April 2018

Community, Creativity, Culture



Cinema

The first public showing of a film in the Goods Shed cinema took place on 22 March when the film *Stars Don't Die in Liverpool* was watched by an appreciative audience of over 60 people. Ice creams were available for the traditionalists and the bar was also open. The presentation of the film was faultless and everybody enjoyed the experience. On the 29th the film was *Blade Runner 2049* with some awesome sound effects rumbling all around the auditorium. With adult tickets at £7, children's £5, brilliant films, comfortable seats and friendly atmosphere, you would be foolish not to try out the new cinema as soon as you can. Check out future films on the shed-arts.co.uk website.



Waitrose Malmesbury Green Token scheme Tesco Tetbury Bags of Help

We have been lucky enough to be one of the selected charities chosen by the Waitrose Green Token Scheme at Malmesbury and Tesco Bags of Help in Tetbury both beginning on 1 May 2018. Start saving your tokens to put in our boxes now! We hope that this will allow us to build the wheelchair access ramp for the carriage in the near future.

Railway Carriage



Good progress is being made with the carriage. The team of volunteers led by Will Cook have been working most days in the last month on refurbishing the carriage. The policy has been to retain as much as possible of the original carriage, while accepting that, for safety reasons and to allow the carriage to function well in its new role, various changes have had to be made. You may be aware that the carriage has been considerably altered at least twice in its life.

The original carriage as built in 1952 had wooden seats but was upgraded while still in Finnish service. When it came to England it was converted for use as a cafe at which time, we think, the tables were added. We have removed some seats from the larger compartment, removed (but kept) the original toilet and cut through the toilet closet to give access to a serving counter. This serving area will have two sinks, a hot water heater, coffee machine, refrigerator and storage space. *Cont...*



Railway Carriage Cont..

We have removed all the seats and tables from the smaller compartment of the carriage and inserted a utility sink. This area will become an arts and crafts workshop and double as a meeting room and overflow green room. Several seats throughout the carriage were ripped, and some of the tables were also in poor condition. By keeping the best we have been able to generally make good throughout.

The new electrical circuitry is in place and working; this includes emergency lighting and smoke alarms. The sinks are in the process of being plumbed in. All the internal secondary glazing has been removed, cleaned up, varnished and reinstated. In general the internal condition has been good but we continue to find that in many places the external woodwork is in poor condition but, we hope, it can be fairly easily replaced. Those parts of the external cladding on the side facing the Goods



Shed that had rotted away have been replaced and guttering is about to be fixed just below the roof line which we hope will add long-term protection to the woodwork.

The carriage still does not look at its best but we are confident that once some good weather arrives we shall soon be able to get on with painting (brown and cream, to match the Goods Shed) and a miracle transformation will take place. We can continue work on the more dilapidated sides which face away from the Goods Shed during the summer.



Donation of Staging



APS (Alexander Production Services Ltd.) have very generously given us some staging and a public address system for the Goods Shed. The stage is a modular system consisting of nine panels of interlocking staging on height-adjustable aluminium legs that can be put up quickly in whatever configuration we choose. The P.A. is a 1 kW system that will sit either side of the stage area and is suitable for use by most live performers needing amplification. We are also very grateful to Jonny Welch, managing director of Fizzthinks360Ltd., a promoter of, amongst others, Whole Lotta Led, who negotiated this donation for us.



Whistle Stop Cafe

The Whistle Stop cafe will be reopening on about 21st April in the restored carriage with an official opening being held on Monday 7 May, Wacky Race Day. See the website for more detail nearer the time. Do come along to see what we have been upto and enjoy the delicious drinks and food that will be on sale.





Recent Events

Throughout March some of Sandra Chin's paintings graced the walls of the Goods Shed making a striking exhibition. Alas, the AirinG-supported Kiera Martin Dance Theatre's 'Here Comes Trouble' planned for the 3rd had to be cancelled due to snow preventing Kiera getting out of Yorkshire. On the 9th, Ileana Ruhemann (flute) & Gillian Tingay (harp) gave us a sublime concert - the Goods Shed's acoustics being especially good for strings. On the 10th we had Rhodri Miles performing his one-man version of the 'Clown in the Moon', a portrait of Dylan Thomas. A wonderful two hours of pathos and humour that had everybody wondering how anyone can remember so much monologue. Unfortunately the weather struck again to rob us of a performance by Sam Kelly and Jamie Francis on the 18th - but they will appear in the near future. On the 24th, our very own local artist and chanteuse, Nicola Clark, gave us "Sweet Company", a touching and humorous recollection of Nicola's family and early life, all sung and told in her own inimitable style.



Volunteer News

Firstly, a big THANK YOU for all the hours of help that volunteers have given to the Shed - it couldn't operate without you. As mentioned last time, we have definite 'groups' of volunteers now - you are very welcome to be part of one or more of them. And please help spread the word that more volunteers are always welcome - feel free to pass on the phone numbers of the contacts below if you know of anyone who may be interested in joining our merry band.

Office (publicity, general; contact - Christine Berry 01666 503076)

Feedback from surprised visitors suggests that there might still be many people in the area who have no idea that we are here or what we offer. Would you be able to help us put this right? Some forms of publicity need a boost and we would really appreciate assistance with this. We plan to open the office for a few hours on Fridays, staffed with volunteers. You would join a friendly team and your work might involve updating cinema leaflets, printing tickets for forthcoming events, organising the distribution of posters and our brochure to cafes and pubs in the area, and perhaps checking that events are fully staffed with volunteers. We plan to open a Friday office from 10am onwards, starting on 6 April. Please get in touch if you can offer a couple of hours, even if it is only once a month, any time you have will be much appreciated.

Café (all areas; contact - Caroline Morgan 01666 505744)

We are delighted to announce that we have now recruited a manager for the cafe. Her name is Sasha Jenner and she has worked in various cafes and restaurants locally. She is very experienced, and a qualified pastry cook. We are hoping to open the cafe on 21 April and plan to arrange a meeting for interested volunteers to meet Sasha and to discuss the way forward. When the carriage is ready we hope to be able to have the café open all year and not have to be dependent on the weather. This was a wonderful venture last year, with lots of social interaction, and there will be plenty of opportunity for various volunteer roles. Please contact Caroline for more information.

Cont...



F&GS *Volunteer News...*

Cinema (front of house, bar, projection; contact – Sally Battersby 01666 504473)

We now have the cinema launch night behind us and it was well attended for a lesser known film. A big thank you to those who volunteered, it all went smoothly and your help was invaluable. So now we are looking for volunteers who wish to help for the future films! We are aiming to screen on Thursdays on a weekly basis, so we need a larger bank of volunteers. You do not need to be there every week – only when you choose to sign up. The roles are not difficult and you do get to see the film as well !

The roles involved are Duty Manager, Bar Manager, Bar Assistant, Projectionist and Box Office (training will be given if you have not done the role before). If you need more information on what the role involves (and they are really not onerous), please contact Sally and she will be more than happy to talk you through it. If you are already familiar with signing up on Dutyman, then the slots are all there ready to be filled.

Projects. (carriage, landscaping, improvements; contact David Walker 01666 500137)

While we would still love to see more volunteers helping with the painting and cleaning of the carriage, the weather tends to limit opportunities. Do let me (David Walker) know if you would like to help and I can then request your specific help when we have the right weather window. The area around the carriage is a bit of a mess but has great potential for a rock garden amongst other things. Can you design a garden or help us build and plant one? Please let me know..

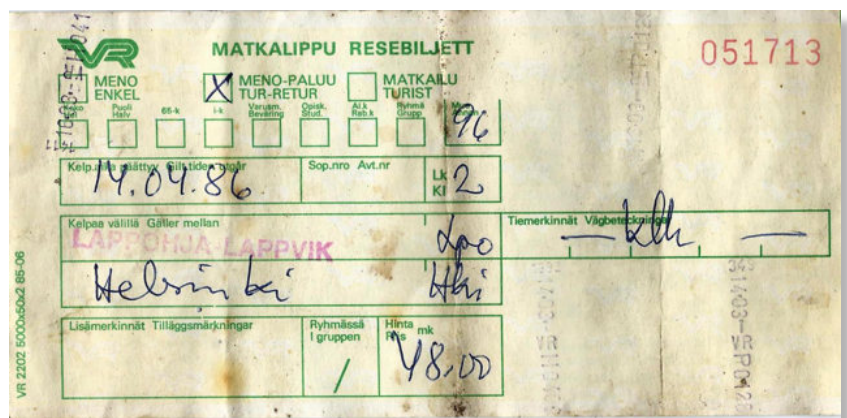


F&GS From the Archive

This month's item is the latest entry in our archive, a ticket found in the carriage during its refurbishment. It is a second class return ticket issued on 14 April 1986 for a journey from Lappohja-Lappvik to Helsinki. Lappohja is the Finnish and Lappvik the Swedish name for a little coastal village at almost the extreme south-westerly point of the country, on the Gulf of Finland. It is about 110km west of Helsinki. Most of Finland was once part of Sweden before it was ceded to Russia in 1809 and became the Grand Duchy of Finland. The Tsar often visited Lappohja (so Wikipedia tells me). The Hanko-Hyvinkää railway, stopping at Lappohja, was inaugurated in 1872.

Finland became independent in 1917 but between 1940 and 1941, after a fierce war, Lappohja again fell under Russian rule. There is a war museum in Lappohja which, I suspect, will concentrate on the fact that Russian amphibious landings were made at nearby Hanko in 1939 and initially defeated.

Our carriage was known to operate on commuter routes into Helsinki but, assuming our unknown passenger kept his ticket until the journey was almost over, we now know that it had outings to the seaside at Lappohja as well.



Contact us if you have any questions or wish to contribute to the newsletter: Kathryn Limoi, office@shed-arts.co.uk, 01666 505496 (9am – 5pm, Tues-Thurs) or David Walker, opheliatheboat@gmail.com. 01666 500137.

