



HRH The Prince of Wales opens Phase One

HRH THE PRINCE OF WALES visited the Goods Shed on 22 December 2016 to observe progress and officially open the building.

He was met by our chairman, Will Cook, and the Mayor, Stephen Hirst, and was then shown around the new auditorium and a number of exhibits.

The Prince then met and talked to several Trust members, showing a genuine warmth and interest in the project.

He spent some time with the artist and musician Nicola Clark and with the amateur sculptress, Mary Doyle, whose beautiful stone sculpture, Bernie the Owl, had pride of place.

Before unveiling the plaque to mark the opening of the Goods Shed, His Royal Highness congratulated those members of the community, some unfortunately now no longer with us, who had laboured away for over 25 years to bring the project to fruition.



The Prince talks to James Scurlock, Jo Gale, Andrea Payne and Kate Lewis with (left) Nicola Clark and Barrie Doyle (Photo: Helen Hyde)

Upcoming events

28 March 2017
New seating installed

3 April 2017
Performance by Tetbury Community Choir

29 April–28 May 2017
Select Festival (Textiles and Contemporary Crafts)



13 May 2017
Amico Quartet (on instruments made by local craftsman Daniel Bristow)

20 May 2017
Blunderbus Theatre Company (children's theatre)

September 2017
Performance by Dursley Male Voice Choir

A name for the Arts Centre

AFTER MONTHS of agonizing and then a short debate at the last meeting of TRLRT, the members decided that the official name of the new arts centre would be "Tetbury Goods Shed".

We appreciate that, for most locals, it will always be just 'the Goods Shed'. We added Tetbury to distinguish our building from other goods sheds, such as Stroud, and to ensure that



Internet searchers would immediately find it. The new name also gives rise to the abbreviation TGS, which it is hoped will become a recognised brand of excellence.

To manage TGS there will also be a new operating company, formed to give TGS the professional, flexible and creative direction that will ensure that the venture is a business success.

BY APRIL 2017, the Goods Shed will be ready to hold events. We are planning key events and festivals around which the year's programme will revolve but this will leave plenty of opportunities for other public and private events. If you would like to enquire about availability, please send an email via the website.

Tetbury Rail Lands Regeneration Trust works in partnership with Tetbury Town Council to manage and develop the town's former railway lands.





Seat appeal reaches target



THANK YOU TO ALL the generous people who have sponsored the retractable seats for the Goods Shed.

All the 182 seats have now been sponsored. The Trust has placed a purchase order with Audience Systems of Westbury, who have promised delivery and installation in the week leading up to 28 March 2017.

The seats will be dark red with charcoal grey carpeting. The total cost will be over £81,000. Of this, £44,500 plus gift aid will come from sponsors with the balance coming from charitable grants.

Some members were frankly dubious about the time it would take to get all the seats sponsored but the response has been magnificent.

Carol concert



2016 WAS THE FOURTH Christmas that we have held "Carols in the Goods Shed" and this time they were sung under the bright lights of the newly-opened main hall. Some may have missed the atmosphere created by rough walls and smoke-darkened beams, dimly illuminated by 15W bulbs in the old shed, but it didn't stop the new Goods Shed being filled to capacity with supporters and well-wishers.

The Evening Silver Band provided excellent accompaniment to the crowd's vigorous singing and three beautiful seasonal songs were performed by Nicola Clark and Heather Bristow accompanied by Richard Lloyd.

Following the handing over of a cheque for £136,700, as the Trust's contribution to the £500,000 costs of the Phase 1 redevelopment work, TRLRT has signed an agreement with Tetbury Town Council to lease the Goods Shed for 25 years at a rent of £1 per year. The Trust will be paying for further building work including acoustic double glazing and restoration of the canopy over the main doors.



Situations Vacant

WE ARE ALWAYS LOOKING for volunteers. And now that we have an almost-completed theatre, there are some exciting opportunities.

We need an **acting arts centre manager** until such time as we can appoint a full-time professional. Is there someone out there with the necessary experience who could help us over the transition period?

Someone with a **personal licence to sell alcohol** is also needed to act as our designated premises supervisor.

There's always a need for **people to organise events**. If you have a particular interest in anything, why not take the plunge and organize an event around it – or better still – a festival! And, of course, we shall need people to **help at the café** and **act as ushers at films and live events**.

Finally – we need someone to be the **volunteer coordinator** who will keep the register of all volunteers, ensure that they are trained and kept interested and happy in their voluntary work.

Until such time as we have that coordinator, please register your interest with the Clerk to the Trust if you are interested in any of the above opportunities.



THE FEW PEOPLE who have signed up to easyfundraising.org.uk have already raised, at no cost to themselves, a goodly sum for the Goods Shed.

If every supporter of the Goods Shed who buys via the Internet were to join, we would be raising hundreds of pounds per month for the cause. Please make the effort to visit [easyfundraising's](http://easyfundraising.org.uk)



From the archive



Tetbury in WWII: STOP LINE GREEN

THE RECENT EXTENSION of the railway path beyond Preston Park allows us to see some curious relics of World War II.

Just past the new bridle gates, on the right (east) of the line, spread down the embankment and covered in ivy, are eight large concrete cylinders in two rows, each about 1.35m high and the same in diameter.

They are anti-tank bollards placed there in 1940 at the height of the German invasion scare. Along with pill boxes and anti-tank ditches, many of which are to be found in the Long Newton and Avening area, they formed part of **Stop Line Green**.

This was a continuous linear defensive position some 100 miles long. It ran in a rough semicircle east of Bristol, from the coast at Highbridge (just south of Weston-super-Mare), through Radstock, Bradford on Avon, Melksham, Chippenham, Malmesbury, Nailsworth and Stroud, to Framilode on the Severn.

Its aim was to protect the strategic port of Bristol should the Germans invade the South Coast of England and incredibly it was all built between July and October of 1940.

Stop Line Green crossed the Tetbury branch line at right angles. It is believed that there were additional, movable bollards placed to the east of the track that could be manhandled into position across the railway line at the last minute to completely block the line.

RAILWAY MEMORIES

Continuing our series reporting memories of the Tetbury branch line:

"I lived in a little cottage at Little Larkhill, very close to the railway line in between Trouble House and Tetbury. We used to be able to tell the time by the train blowing its whistle as it came down from Kemble to Tetbury to warn people that they were coming because there was a railway crossing just past our house.

Over the years, we got to know the driver and the stoker. When we had relations come down from London, during the war, they loved to join us in waving to the trains as they went by. We'd get hold of anything we could to wave and catch their attention. We'd have loved for our visitors to get off by our cottage but it wasn't allowed, so they had to get off in Tetbury and walk up to us in Little Larkhill.

There was a bogie, which the men moved along the tracks using a lever. They did maintenance and checked the blocks of wood holding the tracks were in place. If not, they needed to knock them back. We were delighted one day when they asked if us children would like to have a ride on it - that was the most memorable day for us.

Another unforgettable day was when I wanted to gather some moondaisies on the bank by the railway line and I forgot the time. I was picking away and all of a sudden the train was just a few yards away, my life was in danger but I just managed to grab hold of the wire fence and get to safety. I should have remembered because I always knew the times the trains passed and I never did that again.

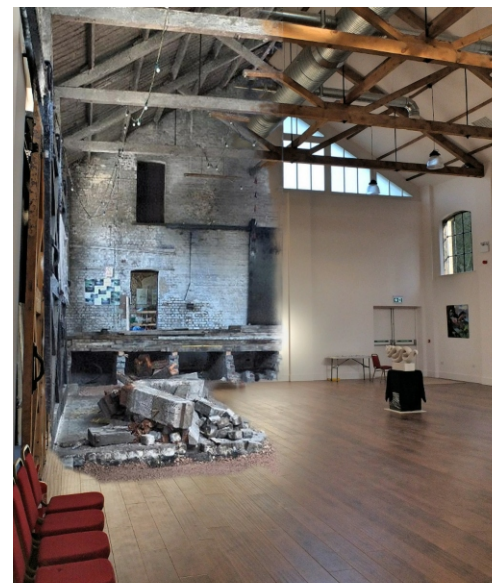
We used to watch the cattle coming by in the train trucks and they'd be offloaded at the market ready for the sales. They were put in the holding pens down in the cattle market before the auction. Later when I lived in London we'd come back by train via Kemble past my little old house to visit my family." DS

Building progress

WORK ON THE MAIN HALL is now complete. The stripped wood roof trusses and oiled, natural wood finish of the main doors are complemented by an attractive oak plank floor, beneath which efficient underfloor heating gives the room a cosy warmth.

The large glass windows and surrounding white walls flood the hall with light. In one corner a short staircase with glass sides gives access to the main office and then on to the "green room".

The annexe still awaits final fitting out and the steel-framed foyer still awaits its glass but one can already appreciate the wonderful building that will be TGS. Completion is expected in late January with final handover from the builder in mid-February.



Above: Then and now. The completed hall, with a glimpse of its condition in 2014