



Countdown to lift-off!

THE TIME HAS COME for this newsletter to start concentrating on the purpose for which it was created – to let you know of all the great events that are coming to the Goods Shed.

Thanks to the Herculean efforts of Nicola Clark, Carolyn Witcher, Jan Vriend and several others, an eclectic programme of arts events is shaping up, with many more to come.

The list is already so long that it is appended to this newsletter so that you can print it out and stick it on your fridge doors.

We will highlight a selection of events in every newsletter but our new website (see below) should be your first call in future to get the details. We do hope that we shall see you all making the most of our wonderful new asset.



'Love is in the Air' Filling the Shed with laughter, poetry and songs on 18 March

New Arts Centre website

SOON AFTER you get this newsletter, our new website www.shed-arts.co.uk should be up and running. The new site is being built specifically for the new Tetbury Goods Shed Arts Centre and will concentrate on the great events that are coming up in the near future.

You will be able to book and pay for tickets at the site. Tickets will also be sold by phone, by collection in advance and at the door - assuming that they are not all

sold out. Initially you will not be able to book individual seats but the facility will be coming.

The current TRLRT website at www.tetburyraillands.com will concentrate on the Trust's wider remit to improve the rail lands in Tetbury and on the proposed trail to Kemble.

 www.shed-arts.co.uk



Building progress

PHASE ONE of the building is on track to complete at the end of February.

Gas is connected, which means that the screed in the annexe can be dried out. Flooring will go down on about 13 February, allowing the toilets to be fitted out.

We have ordered seat plaques with dedications. They will be ready to fit when the seat installation is complete on 28 March. Glazing of the front porch is scheduled for 20 February.

Each of the automatic front glass doors is going to be one metre wide, which as well as giving easy access to wheel chairs, will even allow us to drive a car into the main hall. We think of everything!

After the Arts Centre takes on the lease from Tetbury Town Council, we will install acoustic secondary glazing and blackout blinds. The kitchen will be fitted out, a temporary structure for the café found, and a premises licence applied for and granted.

We hope to have these works completed early in April, again with a lot of the work being done by trust members. All of these items will be paid for exclusively from the Trust's funds, at no cost to Tetbury Town Council.

OPEN SHED FOR PUBLIC CONSULTATION. On Saturday 11 March there will be an open afternoon/evening between 2pm and 6pm at the Goods Shed to bring everyone up to date with what's happening in the project and to solicit ideas for future events. If you would like to get involved as a volunteer for anything from a few minutes to a few hours per month, we will also have information on how to join the team and ideas about ways to help. Look out for more details on the web sites.

Tetbury Rail Lands Regeneration Trust works in partnership with Tetbury Town Council to manage and develop the town's former railway lands.





Volunteers install new bike racks



Having been rained off on the first attempt, the Goods Shed labouring gang returned during a rare break in the weather to finish installing six new cycle racks opposite the main entrance to the Goods Shed.

The racks were bought by the Town Council but the Trust paid for the materials to install them. There should be enough cobbles left over from Phase 1 construction for a hardwearing surface to be laid around the cycle racks later on. In the spring, when the café is open for business, there will now be no excuse for not riding there on your cycles!

RAILWAY MEMORIES

Continuing our series reporting memories of the Tetbury branch line:

"I WAS BORN and brought up at the Crown Inn. We always had lodgers; some were the crews of the trains.

"We had two of them for quite a long time. First was Johnny Waters from south Wales. He used to take me for rides on the engine—no Health & Safety then! Because he worked for the railways, he could travel free and one of these photographs is when he took me to London for a day out.

"The other man was the driver of the last steam train and then the diesel. He used to come to us on Sunday nights on his motorbike from north. Wales and go home as soon as he could on Saturdays. After he left us, he always came back to stay with my parents for a couple of nights. When they died he used to come to us.

"He became one of the family. My family always called him Uncle Arthur. He always came to our wedding anniversaries. I think he used to visit Tim O'Shea, as he worked at Tetbury Station too. When we moved from the Crown in 1951, we lived in a bungalow on the other side of the line. To catch the train we just crossed the track. We had a large garden which now has the new houses at The Old Rope Walk."
DH



DH's bungalow at the Old Rope Walk.

DH and Johnny Waters on a free trip to London.

From the archive

WHEN THE TETBURY branch line opened in December 1889, the main Great Western line from London to Bristol was still 7ft ¾ in broad gauge and was not to be converted to 4ft 8 ½ in standard gauge (or 'narrow gauge' as the GWR called it) until 20 May 1892.

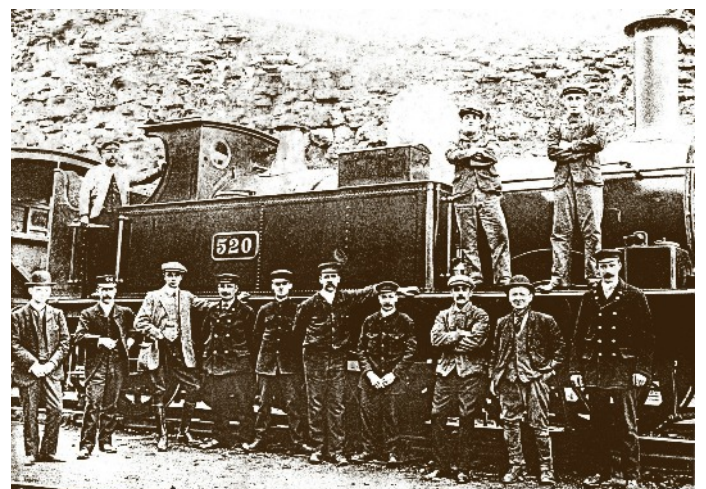
Kemble, on the former **Cheltenham and Great Western Union Railway**, had been converted in 1872, and so the Tetbury branch was built to the standard gauge. GWR's Daniel Gooch had started building standard gauge engines at Swindon as early as 1855 but for years the main source of standard locomotives for the GWR was Wolverhampton.

This was the main works for the **Oxford, Wolverhampton and Worcester (OWW) Railway**, known by all as the Old Worse

and Worse. It was from here that the first locomotives for use on the Tetbury branch originated.

The picture, right, shows No 520, a member of the 517 class built in May 1868. This engine worked the line from December 1909 to December 1912 and was scrapped at Swindon in 1913 after 45 years' service. Some Class 517s soldiered on until well into the 1930s.

(Acknowledgements to Stephen Randolph, author of *The Tetbury Branch* history, and the Curtis family for the photo.)



Above: The Tetbury crew and staff photographed in 1910 at the Tetbury cutting. Mr Hawker, the station master, is 2nd from the left, and Tommy Curtis, guard, is 4th from the left. On the extreme right is Charlie Griffiths, a travelling porter. The driver in the cab is thought to be Jack Ford.



Tetbury community choir concert on 3 April

The first event in the Goods Shed using the retractable seats will be a charity concert to be given by Tetbury Community Choir at 7.30pm on 3 April to raise further funds to help finish equipping the Goods Shed.

It is appropriate that Tetbury Community Choir should have this honour as it shares a similar aim as the Goods Shed,

that is to bring the pleasure of music to as many people in the community as possible.

Anyone can join: you do not have to audition or be able to read music, or even be a musician. Enthusiasm and willingness to learn are the only requirements. The choir is looking to increase its range and so male volunteers

would be especially welcomed, whilst that is not to discourage any ladies who wish to join in this pleasurable activity.

The choir is practising hard for the event so please do make a date to come and support them, tickets £5. If you are interested in joining the choir please contact Jill Dodge on 01666 502257 or Anne Smith 07887 377139.

Cinema update

Long-time supporters of the Goods Shed will know that it has always been our intention to have a first class cinema with equipment to the very latest and highest standards.

We have a quotation from one supplier for a very comprehensive system, and we are now seeking other quotations to make

sure that we are getting best value for money.

The installation of the cinema equipment will be delayed until we have this second quotation, have completed negotiations with film distributors and have trained staff to operate the cinema.



We expect the cinema programme to begin in the autumn, in time for the winter season.

WHAT'S ON AT THE SHED

We are very pleased that this year's **Select Festival**, celebrating the applied arts in the Stroud Valleys, will include a programme of exhibitions, workshops, theatre and music at the Goods Shed from 28 April to 29 May (see next page).

Full details of every local event will shortly be up on the Shed-Arts site, where you will be able to book workshop places and seats. Over 15 events are lined up for the Shed, with dozens more taking place around the Valleys - visit www.sitselect.org to find out more.

Over two weekends (May 6/7 and 13/14), Tetbury will also feature on the Select Trail, when Cotswolds artists open their doors to the public.



Some of the Select Festival events coming in April and May



Kerry Phippen
Exhibition
28 April – 29 May



Blunderbus Theatre
Children's Theatre
20 May



MacGregor and Michael
Select Trail
6/7 May & 13/14 May



Liz Lippiatt
Textile printing workshop
25 May



Daniel Bristow and Amico Quartet 13 May

Daniel Bristow, Tetbury instrument maker, offers a showcase of his craft and a concert by the Amico Quartet on Daniel's instruments on 13 May. Amico Quartet, made up of professional players from the Stroud area, will play Haydn's quartet opus 64, the world premier of a quartet by Johnathan Trim (from Stroud), followed by Brahms C minor and a quartet by Philip Glass

Doors open at 7pm for a 7.30 pm start. Tickets are £10 from Bristow Violins in Long Street and www.shed-arts.co.uk

WHAT'S ON IN 2017 AT

TETBURY GOODS SHED

ARTS CENTRE

MARCH

Love is in the Air

Music & comedy
Sue Limb, Betsy Vriend, Peter Wyton, Miserable Malcolm, Nicola Clark.
Sat 18 March 7-10 pm
£11

EXHIBITION

Noela Bewry
Friday 31st March - Saturday 2 April
Fris, Sats, Suns 10 -4pm
Free entry

APRIL

Candle making workshop

Sophia Russel
Saturday 1st April
10 am-4 pm
£65

Cartoon workshops

Kevin Painter
Sunday 2 April
10-12 infants, juniors
2-4pm secondary
£5 per session

Tetbury Community Choir

Fundraising Concert
Monday 3rd April
7-10 pm
£5

CEILIDH

Saturday 8 April
7-11pm
£12 (Includes ploughman's lunch)

Hannah's Workshops

Monday 10 April
10-12, 2-4pm
£10 per session

Make a caterpillar cushion

Michelle Motti
Wednesday 12 April
10-4pm (children 8yrs up)
£45

CONCERT

Jan Vriend
Thursday 13 April
7-10pm
£20

Bunting Sewing Workshop

Michelle Motti
Wednesday 19 April
10-4pm (children 8 yrs up)
£45

SELECT FESTIVAL 2017

Tetbury Goods Shed Arts
with Select Spring Festival
29th April – 28th May.
www.sitselect.org

Jazz Night

Tony Hymas
Friday 28 April
7-10pm
£15

EXHIBITION

Kerry Hippen
28th April – 29th May
Fris, Sats, Suns 10 -4 pm
Free entry

Apron making workshop

Nikki Ellis
Saturday 29 April
10-4pm
£65

MAY

Wacky Races, Market

Monday 1st May
10- 5pm

Knitty Know How

Tilly Headford
Tuesdays 2,9, 16, 23 May
6-8pm
£5

Pictures & Places;

*Gloucestershire Woollen Industry
in Paintings.*
Jenny Tann
Friday 5 May
7-9
£7

Club Cairo; Artique

Egyptian dance
Carmen Jones
Saturday 6 May
7pm-11pm
£15

Knit Community Bunting

Pat Hodges
Sunday 7 May
10am-4pm Drop-in
£5

Indian Block Printing

Clare Walsh
Thursday 11 May
10am- 1pm
£45

Pattern cutting

Valerie George
Saturday 13 May
10am-4pm
£70

CONCERT

AMICO QUARTET
Daniel Bristow Violins
Saturday 13 May
7pm– 10pm
£10

Designer Bag workshop

Michelle Motti
Sunday 14 May
10am-4pm
£70 (includes some materials)

Textile Printing workshop

Liz Lippiatt
Thursday 18 May
10am-4pm
TBC

Lewis & Wood

*Stephen Lewis,
Magdalen Jebb*
Friday 19 May
7-9pm
£7

Dogs don't do Ballet

Blunderbus Theatre
Saturday 20 May
11.30am, and 2.30pm
£10, £36 family of 4

Find your inner Mary Poppins

Lou Verity
Sunday 21st May
10am-4pm Drop-in
£ TBC

Needle felting workshop

*Steffi Stern,
Sophie Buckley*
Saturday 27 May
£60

Millinery workshop

Louise Pocock
Sunday 28 May
10am-4pm
£85 (includes materials)

Woolsack Day, Market

Monday 29 May
10am– 5pm

Hannah's Workshops

Wednesday 31st May
10am-12pm &
2pm-4pm
£10 per session

EXHIBITION

Maggie Shaw
Friday 2 June – Sunday 25th
June
Fris, Sats, Suns
10am -4pm
Free Entry

JUNE

Vick's Art Classes

Victoria Orr Ewing
Saturdays 3,10,17,24 June
10.30am-1pm
£10

Women in Harmony

Tunbridge Ladies Choir
Saturday 10 June
7pm-10pm
£10

JULY

CONCERT

James Lisney
Saturday 22 July
7pm-10pm
£ TBC

SEPTEMBER

Comedy night

Matt Roseblade
Saturday 2nd September
£ TBC

Choral Concert

Dursley Male Voice Choir
Saturday 16 September
7pm-10pm
£10